



Quality first, customer supreme

Keep the company moving and make the perfect products

Keep the company improving and make the products perfect



**台州市卓信塑业有限公司**

**TAIZHOU ZHUOXIN PLASTICS CO.,LTD.**



## 公司简介

COMPANY BRIEF INTRODUCTION

**Taizhou Zhouxin Plastics Co., Ltd.** (set up in 2006) is a professional manufacture that produce plastic construction products including U-PVC pipes and fittings for water supply and drainage; PPR pipes and fittings for cold and hot water; valves, plastic taps and mould and ect.

Our company located in Huangyan, Zhejiang Province which is famous for "The Homeland of Mould", 20 kms from air port and 3kms from train station. It's convenience for customer's coming.

Our registered capital RMB1,000,000 with annual output RMB15,000,000 .

It covers 3600 square meters and 123 employees, including 5 technicians which reaches ISO standard. With the enterprise growing and worldwide market strategy , we continuing absorb high quality staffs, prepare for blooming.

We now have 4 automatic products' lines and 30 plastic injection machines, 3 material blending machines, and a mould workshop. Mainly ASTM standard PVC pipes and fittings, BS standard fittings, NBR5648 standard fittings, valves, taps and moulds, ect, which meet ANSI, BS, DIN .Our products are widely used in agriculture, industry, building, garden irrigation area.

We take market as a leading, surviving on high quality, insisting on developing with science and technology, taking management to get benefit, seeking service with prestige. Taking the tenets of "Quality first, Clients focus, Innovating continuously". With the high quality, our products are greatly favored by overseas clients.

We sincerely invite all domestic and overseas clients to come to advise and cooperate.

# PVC-U FOR SUPPLYING WATER SERIES NBR5648



COUPLING	SPECIFICATION	
ITEM NO:BN01	20	25
STANDARD:NBR5648	32	40
	50	63



EQUAL TEE	SPECIFICATION	
ITEM NO:BN02	20	25
STANDARD:NBR5648	32	40
	50	63



REDUCING TEE	SPECIFICATION	
ITEM NO:BN03	25x20	32x25
STANDARD:NBR5648		



FEMALE COUPLING	SPECIFICATION	
ITEM NO:BN04	20x1/2"	25x3/4"
STANDARD:NBR5648	32x1"	40x1-1/4"
	50x1-1/2"	63x2"



MALE ADAPTER	SPECIFICATION	
ITEM NO:BN05	20x1/2"	40x1-1/4"
STANDARD:NBR5648	25x3/4"	50x1-1/2"
	32x1"	63x2"



90 DEG ELBOW	SPECIFICATION	
ITEM NO:BN06	20	25
STANDARD:NBR5648	32	40
	50	63



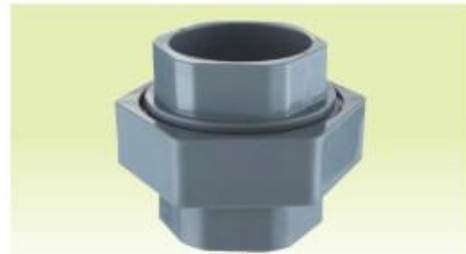
FEMALE ELBOW	SPECIFICATION
ITEM NO:BN07 STANDARD:NBR5648	20x1/2" 25x3/4" 32x1"



REDUCING COUPLING	SPECIFICATION
ITEM NO:BN08 STANDARD:NBR5648	25x20 32x25 40x32



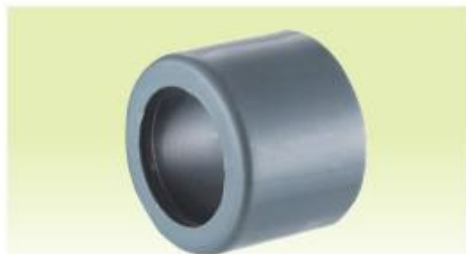
REDUCING ELBOW	SPECIFICATION
ITEM NO:BN09 STANDARD:NBR5648	25x20 32x25 40x25 40x32



UNION	SPECIFICATION
ITEM NO:BN10 STANDARD:NBR5648	20 25 32 40 50 63



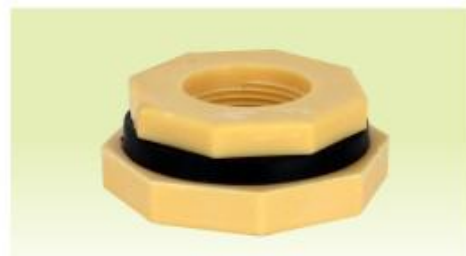
UNION CONNECTOR	SPECIFICATION
ITEM NO:BN11 STANDARD:NBR5648	20x1/2" 25x3/4" 32x1" 40x1-1/4" 50x1-1/2" 63x2"



REDUCING RING	SPECIFICATION
ITEM NO:BN12 STANDARD:NBR5648	25x20 32x25 40x32



45 DEG ELBOW	SPECIFICATION
ITEM NO:BN14 STANDARD:NBR5648	20 25 32 40 50 63



PP UNION	SPECIFICATION
ITEM NO:ZX901	32

■ TAIZHOU ZHUOXIN PLASTICS CO.,LTD.





FEMALE COUPLING	SPECIFICATION
ITEM NO:C01 END CONNECTOR:THREAD	1/2" 3/4" 1" 1-1/4" 1-1/2" 2"



FEMALE ELBOW	SPECIFICATION
ITEM NO:C02 END CONNECTOR:THREAD	1/2" 3/4" 1" 1-1/4" 1-1/2" 2"



FEMALE TEE	SPECIFICATION
ITEM NO:C03 END CONNECTOR:THREAD	1/2" 3/4" 1" 1-1/4" 1-1/2" 2"



FEMALE REDUCING TEE	SPECIFICATION
ITEM NO:C04 END CONNECTOR:THREAD	3/4"x1/2" 1"x1/2" 1"x3/4"



MALE COUPLING	SPECIFICATION
ITEM NO:C05 END CONNECTOR:THREAD	1/2" 3/4" 1" 1-1/4" 1-1/2" 2"



MALE & FEMALE ELBOW	SPECIFICATION
ITEM NO:C06 END CONNECTOR:THREAD	1/2" 3/4" 1"



FEMALE AND MALE ADAPTER	SPECIFICATION
ITEM NO:C07 END CONNECTOR:THREAD	3/4"x1/2" 1"x1/2" 1"x3/4" 1-1/4"x3/4" 1-1/4"x1" 1-1/2"x1-1/4" 1-1/2"x3/4" 1-1/2"x1" 2x1" 2x1"-1/4" 2x1"-1/2"



MALE PLUG	SPECIFICATION
ITEM NO:C08 END CONNECTOR:THREAD	1/2" 3/4" 1"



FEMALE REDUCER	SPECIFICATION
ITEM NO:C09 END CONNECTOR:THREAD	3/4"x1/2" 1"x1/2" 1"x3/4"



FEMALE & MALE REDUCER	SPECIFICATION
ITEM NO:C10 END CONNECTOR:THREAD	3/4"x1/2" 1"x1/2" 1"x3/4"



FEMALE & MALE UNION	SPECIFICATION
ITEM NO:C11 END CONNECTOR:THREAD	1/2" 3/4" 1"



FEMALE UNION	SPECIFICATION
ITEM NO:C12 END CONNECTOR:THREAD	1/2" 3/4" 1" 1-1/4" 1-1/2" 2"



FEMALE UNION ELBOW	SPECIFICATION
ITEM NO:C13	1/2"
END CONNECTOR:THREAD	3/4"
	1"



FEMALE & MALE UNION ELBOW	SPECIFICATION
ITEM NO:C14	1/2"
END CONNECTOR:THREAD	3/4"
	1"



REDUCING ELBOW	SPECIFICATION
ITEM NO:C15	1/2"X3/4"
END CONNECTOR:THREAD	



ELBOW WITH BRASS	SPECIFICATION
ITEM NO:C16	1/2"
END CONNECTOR:THREAD	



MALE REDUCER	SPECIFICATION
ITEM NO:C17	3/4"x1/2"
END CONNECTOR:THREAD	1"x1/2"
	1"x3/4"



FEMALE CAP	SPECIFICATION
ITEM NO:C18	1/2" 3/4" 1"
END CONNECTOR:THREAD	1 1/4" 1 1/2" 2"





CLIP	SPECIFICATION
ITEM NO:C19 END CONNECTOR:THREAD	1/2" 3/4"



UNION WITH MOVABLE HEAD	SPECIFICATION
ITEM NO:C20 END CONNECTOR:THREAD	3/4"



MALE & FEMALE UNION CONNECTOR	SPECIFICATION
ITEM NO:C21 END CONNECTOR:THREAD	1/2" 3/4" 1" 1-1/4" 1-1/2" 2"



ELBOW WITH PLATE	SPECIFICATION
ITEM NO:C22 END CONNECTOR:THREAD	1/2"



BS WATER SUPPLY PIPES	SPECIFICATION
	1/2x2.77    3/4x2.87 1x3.38    1-1/4"x3.56 1-1/2"x3.68    2"x3.91 2"x4.2    2-1/2"x5.16 3"x5.49    3"x5.7 4"x6.02    4"x7.3



# PVC-U FOR SUPPLY WATER SERIES SCH40



COUPLING	SPECIFICATION
ITEM NO:AN01 STANDARD:ASTM D2466	1/2" 3/4" 1" 1 1/4" 1 1/2" 2" 2 1/2" 3" 4"



CAP	SPECIFICATION
ITEM NO:AN02 STANDARD:ASTM D2466	1/2" 3/4" 1" 1 1/4" 1 1/2" 2" 2 1/2" 3" 4"



TEE	SPECIFICATION
ITEM NO:AN03 STANDARD:ASTM D2466	1/2" 3/4" 1" 1 1/4" 1 1/2" 2" 2 1/2" 3" 4"



FEMALE ADAPTER	SPECIFICATION
ITEM NO:AN04 STANDARD:ASTM D2466	1/2" 3/4" 1" 1 1/4" 1 1/2" 2"



MALE ADAPTER	SPECIFICATION
ITEM NO:AN05 STANDARD:ASTM D2466	1/2" 3/4" 1" 1 1/4" 1 1/2" 2"



90DEG ELBOW	SPECIFICATION
ITEM NO:AN06 STANDARD:ASTM D2466	1/2" 3/4" 1" 1 1/4" 1 1/2" 2" 2 1/2" 3" 4"



45DEG ELBOW	SPECIFICATION
ITEM NO:AN07 STANDARD:ASTM D2466	1/2" 3/4" 1" 1 1/4" 1 1/2" 2" 2 1/2" 3" 4"



FEMALE TEE	SPECIFICATION
ITEM NO:AN08 STANDARD:ASTM D2466	1/2" 3/4" 1"



FEMALE ELBOW	SPECIFICATION
ITEM NO:AN09 STANDARD:ASTM D2466	1/2" 3/4" 1"



REDUCING TEE	SPECIFICATION
ITEM NO:AN10 STANDARD:ASTM D2466	3/4"×1/2" 1"×1/2" 1"×3/4"



REDUCING BUSHING	SPECIFICATION
ITEM NO:AN11 STANDARD:ASTM D2466	3/4"×1/2" 1"×1/2" 1"×3/4" 1 1/4"×1" 1 1/2"×1" 1 1/2"×1 1/4" 2"×1 1/2" 2"×4" 3"×4"



REDUCING COUPLING	SPECIFICATION
ITEM NO:AN12 STANDARD:ASTM D2466	3/4"×1/2" 1"×1/2" 1"×3/4" 1-1/4"×1" 1-1/4"×3/4" 1-1/2"×1-1/4" 1-1/2"×1 2"×1-1/2" 2"×1-1/4" 2-1/2"×2" 2-1/2"×1-1/2" 3"×2-1/2" 3"×2" 4"×3" 4"×2-1/2"



REDUCING FEMALE ELBOW	SPECIFICATION
ITEM NO:AN13 STANDARD:ASTM D2466	3/4"×1/2" 1"×1/2" 1"×3/4"



REDUCING FEMALE TEE	SPECIFICATION
ITEM NO:AN14 STANDARD:ASTM D2466	3/4"×1/2" 1"×1/2" 1"×3/4"



REDUCING BUSHING (AN15)MIP*FIP	SPECIFICATION
ITEM NO:AN15 STANDARD:ASTM D2466	3/4"×1/2"



PLUG	SPECIFICATION
ITEM NO:AN16 STANDARD:ASTM D2466	1/2" 3/4" 1" 1 1/4" 1 1/2" 2"



PIPE CLIP	SPECIFICATION
ITEM NO:AN17 STANDARD:ASTM D2466	1/2" 3/4" 1" 1 1/4" 1 1/2" 2" 3" 4"



COMPERSSION COUPLING	SPECIFICATION
ITEM NO:AN18 STANDARD:ASTM D2466	1/2" 3/4" 1" 1 1/4" 1 1/2" 2" 2 1/2" 3" 4"



UNION	SPECIFICATION
ITEM NO:AN19 STANDARD:ASTM D2466	1/2" 3/4" 1" 1 1/4" 1 1/2" 2"



PVC PIPE
----------



DWV COUPLER (II)	SPECIFICATION
ITEM NO:D01 STANDARD:ASTM D2665	3" 4"



DWV 90DEG Elbow (II)	SPECIFICATION
ITEM NO:D02 STANDARD:ASTM D2665	3" 4"



DWV 45DEG Elbow (II)	SPECIFICATION
ITEM NO:D03 STANDARD:ASTM D2665	3" 4"



DWV 90DEG TEE (II)	SPECIFICATION
ITEM NO:D04 STANDARD:ASTM D2665	3" 4"



DWV TEE	SPECIFICATION
ITEM NO:D05 STANDARD:ASTM D2665	1-1/2" 2" 3" 4" 6"



DWV ELBOW-90	SPECIFICATION
ITEM NO:D06 STANDARD:ASTM D2665	1-1/2" 2" 3" 4" 6"





**SAM-UK<sup>®</sup>**

**PPR**



COUPLING	SPECIFICATION
ITEM NO:B01	20 25 32
STANDARD:DIN	40 50 63
	75 90 110



90DEG ELBOW	SPECIFICATION
ITEM NO:B02	20 25 32
STANDARD:DIN	40 50 63
	75 90 110



45DEG ELBOW	SPECIFICATION
ITEM NO:B03	20 25 32
STANDARD:DIN	40 50 63
	75 90 110



TEE	SPECIFICATION
ITEM NO:B04	20 25 32
STANDARD:DIN	40 50 63
	75 90 110



REDUCING COUPLING	SPECIFICATION
ITEM NO:B05 STANDARD:DIN	25x20 32x20 32x25
	40x20 40x25 40x32
	50x20 50x25 50x32
	50x40 63x20 63x25
	63x32 63x40 63x50
	75x20 75x25 75x32
	75x40 75x50 75x63



CAP	SPECIFICATION
ITEM NO:B06 STANDARD:DIN	20 25
	32 40
	50 63
	75





FEMALE COUPLING	SPECIFICATION
ITEM NO:B07 STANDARD:DIN	20x1/2" 25x1/2" 25x3/4" 32x1/2" 32x3/4" 32x1" 40x1-1/4" 50x1-1/2" 63x2"



MALE COUPLING	SPECIFICATION
ITEM NO:B08 STANDARD:DIN	20x1/2" 25x1/2" 25x3/4" 32x1/2" 32x3/4" 32x1" 40x1-1/4" 50x1-1/2" 63x2"



FEMALE ELBOW	SPECIFICATION
ITEM NO:B09 STANDARD:DIN	20x1/2" 20x3/4" 25x1/2" 25x3/4" 32x1/2" 32x3/4" 32x1" 40x1-1/4" 50x1-1/2" 63x2"



MALE ELBOW	SPECIFICATION
ITEM NO:B10 STANDARD:DIN	20x1/2" 20x3/4" 25x1/2" 25x3/4" 32x1/2" 32x3/4" 32x1" 40x1-1/4" 50x1-1/2" 63x2"



REDUCING TEE	SPECIFICATION
ITEM NO:B11 STANDARD:DIN	25x20*25 32x20*32 32x25*32 40x20*40 40x25*40 40x32*40 50x20*50 50x25*50 50x32*50 50x40*50 63x20*63 63x25*63 63x32*63 63x40*63 63x50*63 75x20*75 75x25*75 75x32*75 75x40*75 75x50*75 75x63*75



UNION	SPECIFICATION
ITEM NO:B12 STANDARD:DIN	20 25 32 40 50 63



FEMALE TEE	SPECIFICATION
ITEM NO: B13 STANDARD: DIN	20x1/2" 20x3/4" 25x1/2" 25x3/4" 32x1/2" 32x3/4" 32x1" 40x1-1/4" 50x1-1/2" 63x2"



MALE TEE	SPECIFICATION
ITEM NO: B14 STANDARD: DIN	20x1/2" 20x3/4" 25x1/2" 25x3/4" 32x1/2" 32x3/4" 32x1" 40x1-1/4" 50x1-1/2" 63x2"



MALE UNION	SPECIFICATION
ITEM NO: B15 STANDARD: DIN	20x1/2"M 25x3/4"M 32x1"M 40x1"-1/4"M 50x1-1/2"M 63x2"M



FEMALE UNION	SPECIFICATION
ITEM NO: B16 STANDARD: DIN	20x1/2"F 25x3/4"F 32x1"F 40x1"-1/4"F 50x1-1/2"F 63x2"F



BALL VALVE	SPECIFICATION
ITEM NO: B17 STANDARD: DIN	20 40 25 50 32 63



CONCEALED VALVE(I)	SPECIFICATION
ITEM NO: B18 STANDARD: DIN	20 25 32



STOP VALVE	SPECIFICATION
ITEM NO:B20 STANDARD:DIN	20 25 32



BRIDGE	SPECIFICATION
ITEM NO:B21 STANDARD:DIN	20 25 32



CONCEALED VALVE	SPECIFICATION
ITEM NO:B22 STANDARD:DIN	20 25 32



HEAVY STOP VALVE	SPECIFICATION
ITEM NO:B23 STANDARD:DIN	20 25 32 40 50 63



TRUE UNION BALL COCK	SPECIFICATION
ITEM NO:B24 STANDARD:DIN	20 40 25 50 32 63



MALE BRASS BALL COCK	SPECIFICATION
ITEM NO:B25 STANDARD:DIN	20x1/2"M 25x3/4"M 32x1"M



FEMALE BRASS BALL VALVE	SPECIFICATION
ITEM NO: B26 STANDARD: DIN	20x1/2"F 25x3/4"F 32x1"F



REDUCING ELBOW	SPECIFICATION
ITEM NO: B27 STANDARD: DIN	25x20 32x20 32x25



U CLIP	SPECIFICATION
ITEM NO: B28 STANDARD: DIN	16 20 25 32 40



PIPE CUTTER	SPECIFICATION
ITEM NO: B29 STANDARD: DIN	20-32



WELDING MACHINE	SPECIFICATION
ITEM NO: B30 STANDARD: DIN	20-32 20-63



PPR PIPE
----------

■ TAIZHOU ZHUOXIN PLASTICS CO.,LTD.





PVC COMPACT BALL VALVE	SPECIFICATION
ITEM NO:E01 END CONNECTOR:SOCKET THREAD STANDARD:DIN ANSI BS	1/2" 3/4" 1" 1-1/4" 1-1/2" 2" 2-1/2" 3" 4"



PVC OCTAGONAL BALL VALVE	SPECIFICATION
ITEM NO:E02 END CONNECTOR:SOCKET THREAD STANDARD:DIN ANSI BS	1/2" 3/4" 1" 1-1/4" 1-1/2" 2" 2-1/2" 3" 4"



PVC DOUBLE UNION BALL VALVE	SPECIFICATION
ITEM NO:E03 END CONNECTOR:SOCKET STANDARD:DIN ANSI BS	1/2" 3/4" 1" 1-1/4" 1-1/2" 2" 2-1/2" 3" 4"



PVC SINGLE UNION BALL VALVE	SPECIFICATION
ITEM NO:E04 END CONNECTOR:SOCKET STANDARD:DIN ANSI BS	1/2" 3/4" 1" 1-1/4" 1-1/2" 2" 2-1/2" 3" 4"



PVC FOOT VALVE	SPECIFICATION
ITEM NO:E05 END CONNECTOR:SOCKET THREAD STANDARD:DIN ANSI BS	3/4" 1" 1-1/4" 1-1/2" 2" 2-1/2" 3" 5" 4" 6" 8"



PVC CHECK VALVE	SPECIFICATION
ITEM NO:E06 END CONNECTOR:SOCKET STANDARD:DIN ANSI BS	1/2" 3/4" 1" 1-1/4" 1-1/2" 2" 2-1/2" 3" 4" 6" 8"



PVC BUTTERFLY VALVE (HANDLE LEVERTYPE)	SPECIFICATION
ITEM NO:E07 END CONNECTOR:FLANGE STANDARD:DIN ANSI BS	2" 2-1/2" 3" 4" 5" 6" 8"



PVC BALL VALVE	SPECIFICATION
ITEM NO:E08	20 40
END CONNECTOR:SOCKET	25 50
STANDARD:DIN	32 63

# SANITARY WARE SERIES



ITEM NO:ZX8001  
MATERIAL:PP



ITEM NO:ZX8002  
MATERIAL:PVC



ITEM NO:ZX8012  
MATERIAL:PP PVC



ITEM NO:ZX8021  
MATERIAL:PP PVC



ITEM NO:ZX8031  
MATERIAL:PP



ITEM NO:ZX8032  
MATERIAL:PP



ITEM NO:ZX8052  
MATERIAL:ABS



ITEM NO:ZX8055  
MATERIAL:PP ABS



ITEM NO:ZX8060  
MATERIAL:PVC



ITEM NO:ZX8061  
MATERIAL:PVC



ITEM NO:ZX8062  
MATERIAL:PVC



ITEM NO:ZX8063  
MATERIAL:PVC



ITEM NO:ZX8066  
MATERIAL:PVC



ITEM NO:ZX8090  
MATERIAL:ABS PVC



ITEM NO:ZX8091  
MATERIAL:ABS

PVC inside (mm)	size (inch)	ANSI outside diameter (mm)	diameter cns standard		BS outside diameter (mm)	JIS standard		DIN standard	
			outside diameter (mm)	wall thickness (mm)		outside diameter (mm)	wall thickness (mm)	outside diameter (mm)	wall thickness (mm)
10	3/8"	17.14	18±0.2	2.2±0.6	17.14	18±0.2	2.5±0.2	16±0.2	
15	1/2"	21.34	22±0.2	2.7±0.6	21.34	22±0.2	3.0±0.3	20±0.2	3.0±0.3
20	3/4"	26.67	26±0.2	2.7±0.6	26.67	26±0.2	3.0±0.3	25±0.2	3.0±0.3
25	1"	33.4	34±0.3	3.2±0.6	33.4	32±0.2	3.5±0.3	32±0.2	3.5±0.4
32	1+1/4"	42.16	42±0.3	3.2±0.6	42.16	38±0.3	3.5±0.3	40±0.2	3.5±0.4
40	1+1/2"	48.26	48±0.4	3.6±0.8	48.26	48±0.4	4.0±0.4	50±0.2	4.0±0.4
50	2"	60.32	60±0.5	4.1±0.8	60.32	60±0.5	4.5±0.4	63±0.3	4.5±0.4
65	2+1/2"	73.02	76±0.5	4.1±0.8	73.02	76±0.5	4.5±0.4	75±0.3	4.5±0.4
80	3"	88.9	89±0.5	5.1±0.8	88.9	89±0.5	5.9±0.4	90±0.3	5.9±0.4
100	4"	114.3	114±0.6	6.6±1.0	114.3	114±0.6	7.1±0.5	110±0.3	7.1±0.5
125	5"	141.3	140±0.8	7.5±1.2	141.3	140±0.8	7.5±0.5	140±0.4	7.5±0.5
150	6"	168.28	165±1.0	8.5±1.4	168.28	165±1.0	9.6±0.7	160±0.4	9.6±0.7
200	8"	219.08	216±1.3	10.5±1.4	219.08	216±1.3	11.0±0.7	225±0.5	11.0±0.7
250	10"	273.05	267±1.6	13.0±1.8	273.05	267±1.6	13.6±0.9	250±0.5	13.6±0.9

公称外径(De)		壁厚 (MM)								长度 mm
		公称压力 (Mpa)								
		PN1.00Mpa		PN1.25Mpa		PN1.60Mpa		PN2.00Mpa		
公称外径(De)	平均允许偏差	基本尺寸	公差	基本尺寸	公差	基本尺寸	公差	基本尺寸	公差	4000±10
16	+0.3 0					1.8	+0.5 0	2.2	+0.5 0	
20						2.3		2.8		
25	+0.3 0			2.3	+0.5 0	2.8	+0.5 0	3.5	+0.6 0	
32	+0.3 0	2.4	+0.5 0	3.0	+0.5 0	3.6	+0.6 0	4.4	+0.7 0	
40	+0.4 0	3.0	+0.5 0	3.7	+0.6 0	4.5	+0.7 0	5.5	+0.8 0	
50	+0.5 0	3.7	+0.6 0	4.6	+0.7 0	5.6	+0.8 0	6.9	+0.9 0	
63	+0.6 0	4.7	+0.7 0	5.8	+0.8 0	7.1	+1.0 0	8.7	+1.1 0	
75	+0.7 0	5.7	+0.8 0	6.9	+0.9 0	8.4	+1.1 0	10.3	+1.3 0	
90	+0.9 0	6.7	+0.9 0	8.2	+1.1 0	10.1	+1.3 0	12.3	+1.5 0	
110	+1.0 0	8.1	+1.1 0	10.1	+1.2 0	12.3	+1.5 0	15.1	+1.8 0	

Add: Toutuo Industrial Park, Huangyan, Taizhou, Zhejiang, China  
 Tel: 0086-576-84035982 84224545  
 Fax: 0086-576-84035983  
 Zip: 318020  
 E-mail: sales@zuo-xin.com  
 Http://www.zuo-xin.com Http://tzxxy.en.alibaba.com/